

# ROLLER BLIND INSTALLATION INSTRUCTIONS

## IMPORTANT NOTES:

1. Please check that all parts (BRACKETS AND CHILD SAFETY DEVICE) have been supplied before you begin to assemble your new Custom Roller Blind.
2. Do not unroll the blind until it is fully installed.
3. The finished blind width is from the outside of the left bracket to the outside of the right bracket.
4. Ensure that the blind is mounted level for correct operation.

INFORMATION REGARDING BLIND FABRIC: "Please be aware that horizontal lines may appear on the roller blind fabric due to packaging. These lines will drop out once the blind has been hanging for a few days."

## 1. POSITIONING BLINDS

As per your order, determine the correct fitting location.

- 1) Inside the window frame (Inside Mount) or; 2) on the window frame or wall (Outside Mount)

## 2. INSTALLING MOUNTING BRACKETS

Place the bracket in the desired location, as per your order i.e. inside mount or outside mount, mark holes (pictures 1 and 2) and if necessary pre-drill 2 holes (Pre drilling holes is advisable as it may prevent wood from splitting). After drilling the holes, secure the bracket with screws (pictures 3 and 4).

Repeat this process for the right hand side. **NOTE:** You will need to provide your own screws for bracket installation. The screw size we would normally use is 7G 20-25mm screw size. Also be careful to choose the right screw for the right application i.e. screw for metal, timber, aluminium etc...



Photo 1: Outside Mount  
-Mark Holes-

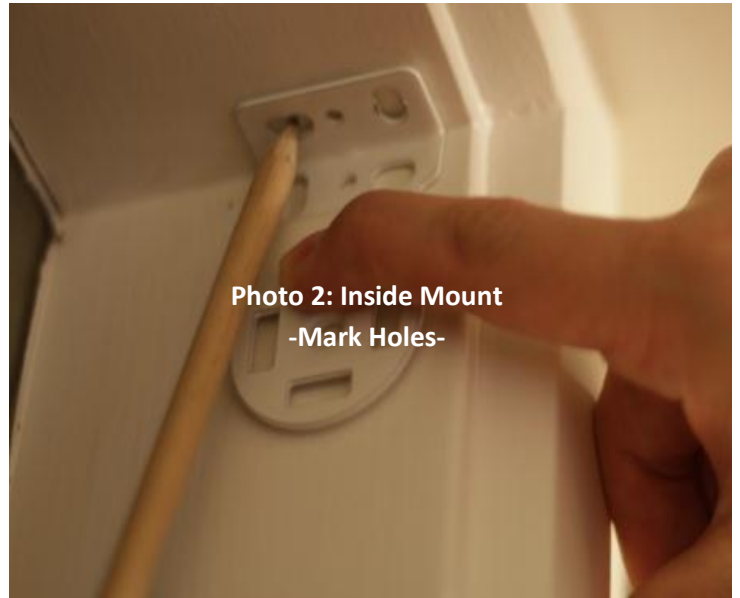
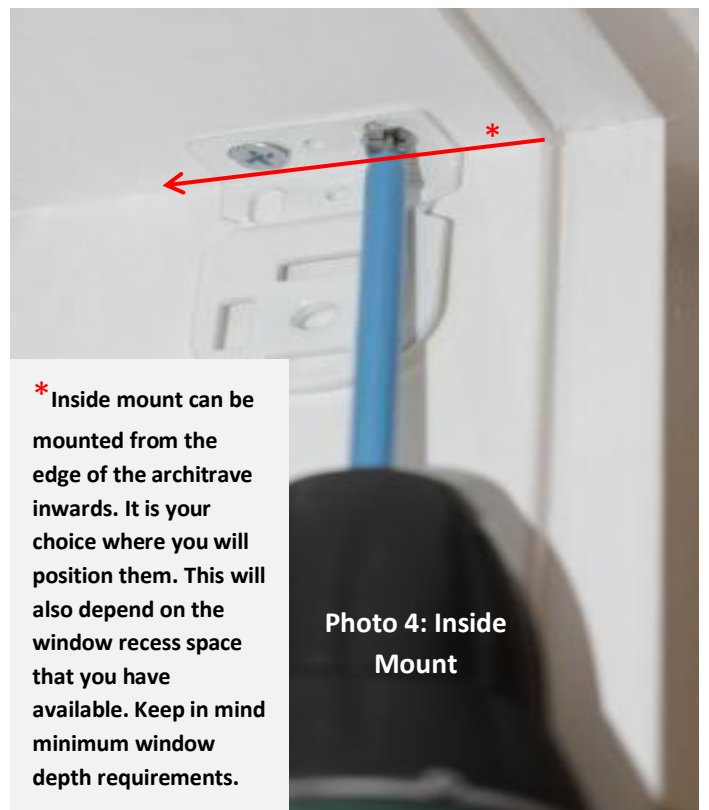


Photo 2: Inside Mount  
-Mark Holes-



Photo 3: Outside Mount

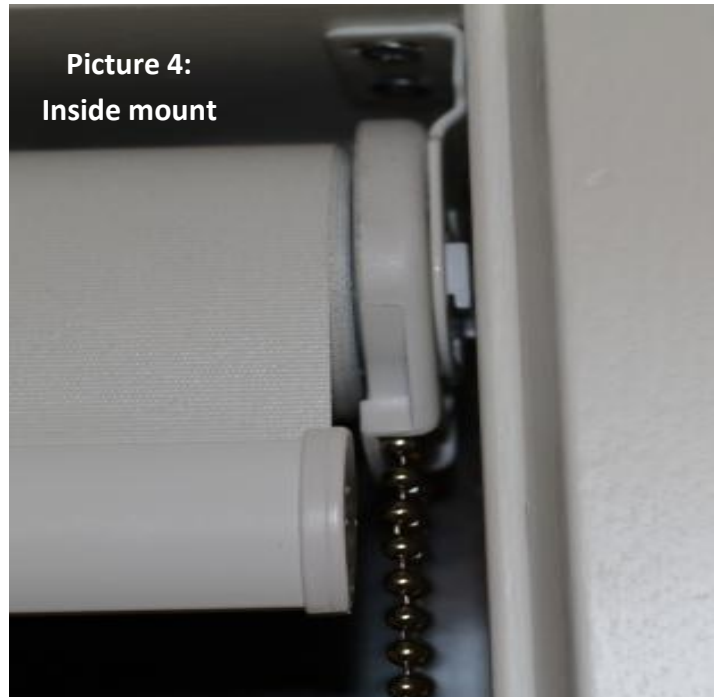
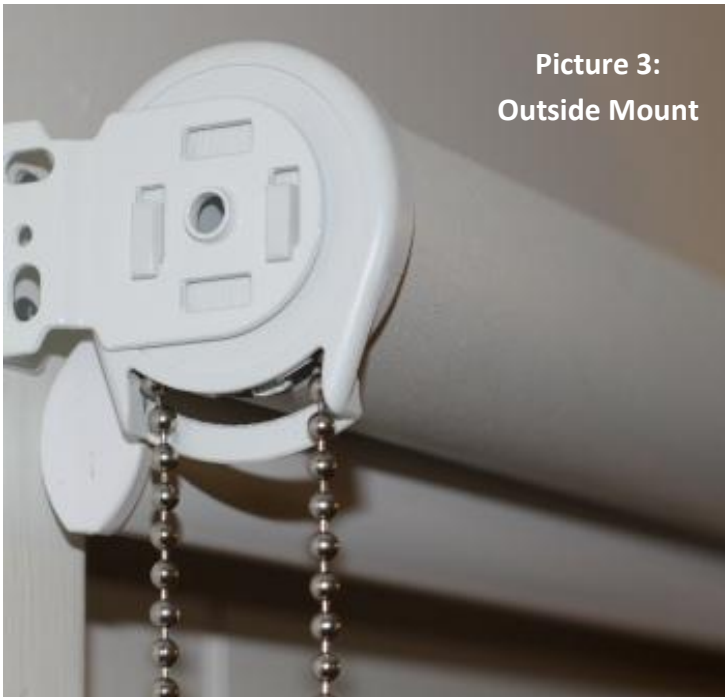


\* Inside mount can be mounted from the edge of the architrave inwards. It is your choice where you will position them. This will also depend on the window recess space that you have available. Keep in mind minimum window depth requirements.

Photo 4: Inside Mount

### 3. ATTACHING THE BLIND TO THE BRACKETS

Insert the PIN mechanism into the PIN hole on the bracket so it is engaged (picture 1 and 2). Carefully align the chain control mechanism with the control bracket (picture 3 and 4). Push the blind into the bracket, ensuring the chain is hanging directly down. Hook into place with a gentle downward motion. NOTE: PIN mechanism is spring loaded, you will need to gently push it in and then hook the mechanism side of the blind in. Our blind mounting brackets are identical so they can be used on either side of the window.



### 4. OPERATING THE BLIND

Now that your blinds are in position, using the chain draw the blinds down and up several times to ensure they operation successfully.

## 5. ATTACHING CHAIN CHILD SAFETY DEVICE

Secure the child safety device to the architrave. If you cannot secure it to the architrave, you should secure the child safety device to the wall. Ensure the chain is not tight as this may restrict smooth blind operation.



**WARNING:** THE CHAIN TENSION DEVICE MUST BE FITTED TO ENSURE CHILD SAFETY. IT IS TO BE POSITIONED AT THE BOTTOM OF THE CHAIN LOOP. IT CAN BE FITTED TO THE INSIDE OF THE WINDOW FRAME OR ON THE OUTSIDE OF THE WINDOW FRAME. IF, FOR SOME REASON, YOU CAN NOT FIT THE DEVICE TO THE WINDOW FRAME, YOU SHOULD MOUNT THE CHILD SAFETY DEVICE ON TO THE WALL.

### FITTING INSTRUCTIONS:

1. POSITION THE TENSION DEVICE AT THE BOTTOM OF THE CHAIN LOOP AS SHOWN PER FIGURE 1.
2. USING APPROPRIATE SCREW, INSTALL THE TENSION DEVICE ONTO THE WINDOW FRAME, MAKING SURE THAT THE LOOP CHAIN HANGS WITH MINIMAL TENSION (AS SHOWN IN FIGURE 2) NOTE: Normally timber screw will be provided for the installation of the child safety device. Please use appropriate screws for the type of surface that you are securing child safety device onto i.e. metal, wood, aluminium etc...

← FIGURE 1

FIGURE 2 →



## WARNING - ALL WINDOW COVERINGS WITH CORD OR CHAIN!

TO AVOID CREATING POSSIBLE STRANGULATION HAZARD FOR CHILDREN, THE CORDED OR CHAINED INTERNAL WINDOW COVERING MUST BE INSTALLED IN SUCH A WAY THAT A LOOSE CORD OR A CHAIN CANNOT FORM A LOOP 220mm OR LONGER AT A HEIGHT OF LESS THAN 1600mm ABOVE FLOOR LEVEL.

\* A CORD/CHAIN GUIDE MAY BE INSTALLED LOWER THAN 1600mm ABOVE FLOOR LEVEL IF THE CORD CHAIN IS SUFFICIENTLY SECURED OR TENSIONED TO PREVENT A LOOP 220mm OR LONGER FROM BEING FORMED.

\*IF A CORD/CHAIN GUIDE IS INSTALLED LOWER THAN 1600mm ABOVE FLOOR LEVEL, IT MUST BE DESIGNED TO PREVENT A CHILD FROM BEING ABLE TO REMOVE THE CORD/CHAIN.

\* IF A CLEAT IS USED TO SECURE THE CORD, IT MUST BE AT LEAST 1600mm ABOVE FLOOR LEVEL BECAUSE A CHILD IS CAPABLE OF UNWINDING A CORD FROM A CLEAT.

If you have ordered Outside Mount you will receive bracket covers. Below are some of the photos of how to install them.

